

2024 – 2025



Vision & Values

Our Promise to You

Exceptional support for people with Intellectual Disability.

Our Vision

For all people with Intellectual Disability to lead a full and enriched life.

Our Purpose

We provide exceptional services that actively support people living with a disability to realise and reach their goals and dreams.

We encourage and nurture connections and engagement with friends, family and the community.

We respect and acknowledge everyone as individuals with their own aspirations and needs.

On the cover: James enjoying being part of the basketball team and back page: Hannah performing in B Factor.





Contents

Board Chair and CEO Report	4
Remembering our Patron	5
At a Glance	6
Home and Living	8
Day Programs	10
Hidden Disabilities	12
People and Culture	14
Supporting Bayley House	16
Your Legacy in Action	18
Finance	20
Thank You to Our Community	22



Acknowledgement of Country

We acknowledge the Traditional Owners and Custodians of this land, the Bunurong People, and pay respect to their Elders past, present and emerging. We recognise and respect their continuing connections to climate, Culture and Country.

Board Chair & CEO Report

Reflecting on the 2025 financial year, we are proud of the resilience and achievements of the Bayley House leadership team and staff. In a difficult operating environment, we continued delivering high quality services and supports to around 340 adults with an intellectual disability in Melbourne's Bayside area.

As you read this report you will see many examples of innovative initiatives that ensure the people we support can realise and reach their goals and dreams.

Despite the challenges, our financial result for this year shows a balanced position thanks largely to revenue received through our Hidden Disabilities program and Philanthropy. However, our financial statements show an operating loss, reflecting two key challenges faced by organisations delivering services under the National Disability Insurance Scheme (NDIS).

The first challenge is how do we operate efficiently, and this is being addressed through investment in new business processes and improved oversight of the staffing and resources we need to deliver flexible, high-quality services to the people we support.

The bigger challenge stems from fundamental issues related to NDIS funding and pricing. Whilst our costs of providing supports and meeting important regulatory and safeguarding standards have increased, the funding provided to people we support has either remained static or decreased.

The service areas where Bayley House operates have seen longstanding not-for-profit registered providers merging with larger interstate providers, this disruption is apparent in many NDIS-funded organisations Australia wide.

In the interests of longer-term viability, we will need to review our services and the nature and types of supports we provide.

This includes providing the NDIS with information on the true cost of delivering services, particularly for individuals with complex needs and those who are most vulnerable. Working with peak bodies we are ensuring Bayley House has a voice at the table.

We are hopeful that the reforms outlined in the NDIS Review will go a long way to address the systemic pricing and funding issues within the sector and urge the Federal and State Governments to implement these with urgency. Once reforms are implemented, Bayley House's long history of safeguarding, best practices, and service quality means we are well-positioned to adapt quickly and continue fulfilling our promise of 'Exceptional support for people with intellectual disability'.



Deb Stuart, CEO with John Ashby, Board Chair

Looking ahead

We are excited to launch our new strategic plan beyond 2030. Developed with valuable insights and feedback from our Board, staff, people we support and families, this new strategic plan revolves around four core priorities:



**Empower
the people we
support to thrive**



**Strengthen
our people and
culture**



**Drive sustainable
growth and
innovation**



**Engage and
inspire our
community**

This plan reaffirms our commitment to Bayley House's almost 75-year-old legacy of supporting people with an intellectual disability. A copy of the new strategic plan will be provided at the AGM.

Remembering our Patron

This year we pay tribute to an outstanding man, Bill Hodgson, who was the Patron of Bayley House for over 30 years.

Bill was introduced to Bayley House in 1977 by Ian Grover a dedicated member of our community. Bill very quickly became involved with fundraising through working on our annual fetes and introducing prominent people to assist in supporting Bayley House during the 1980s.

Our previous Patron, Stan Glassborow, had given dedicated service for 40 years but retired due to ill health. Bill had been such an outstanding volunteer, supporter, financial donor and personally wanted to provide the best possible quality of life for the people we support, he was unanimously chosen to be "Patron of Bayley House".

Bayley House was incredibly fortunate to have such an honourable person with

outstanding drive to make it exceptional. Bill contributed incredible service for people with intellectual disability.

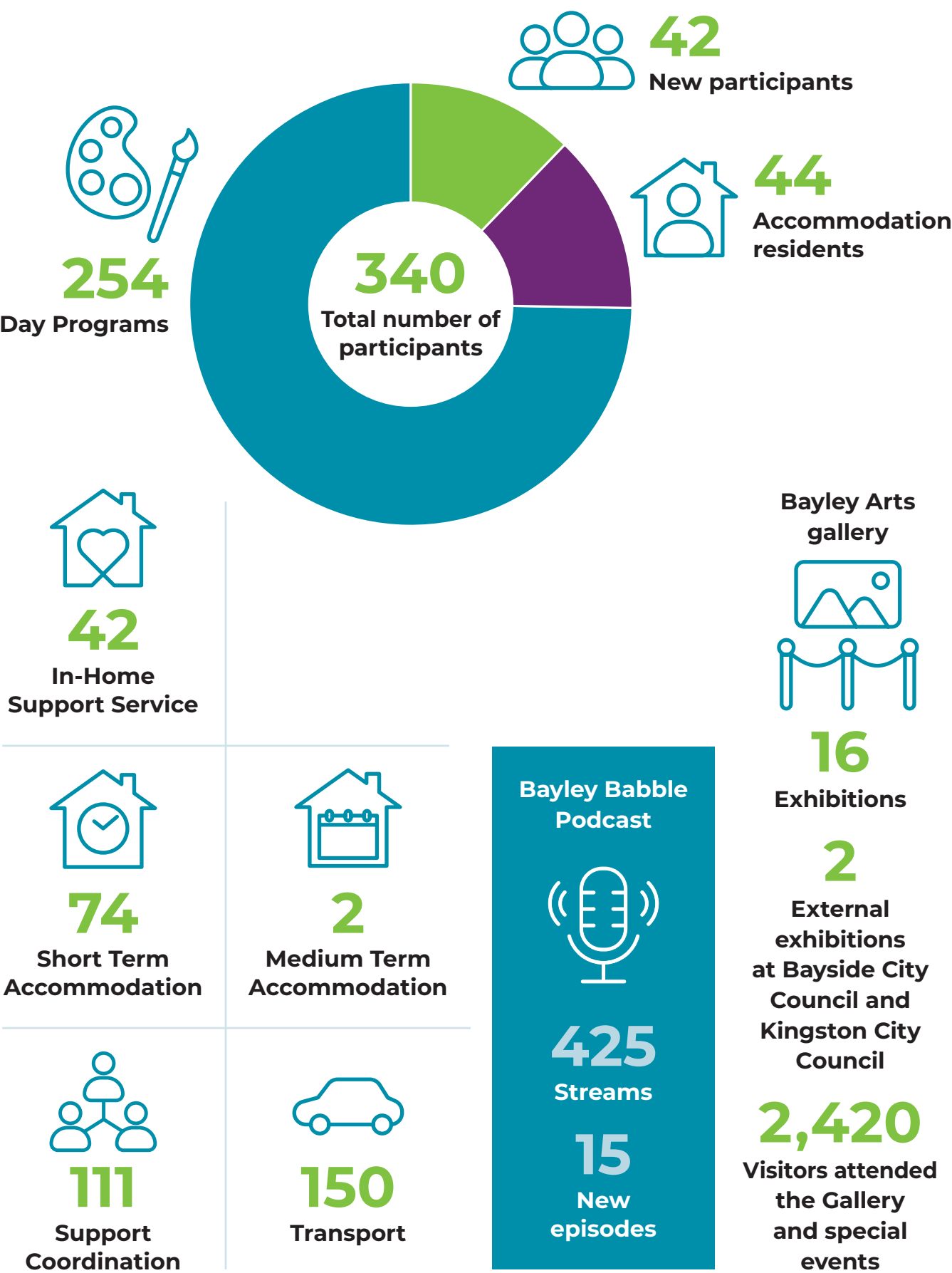
His contacts within the business world and politicians were invaluable in helping Bayley House with building projects, buying new buses and gaining a voice within important networks.

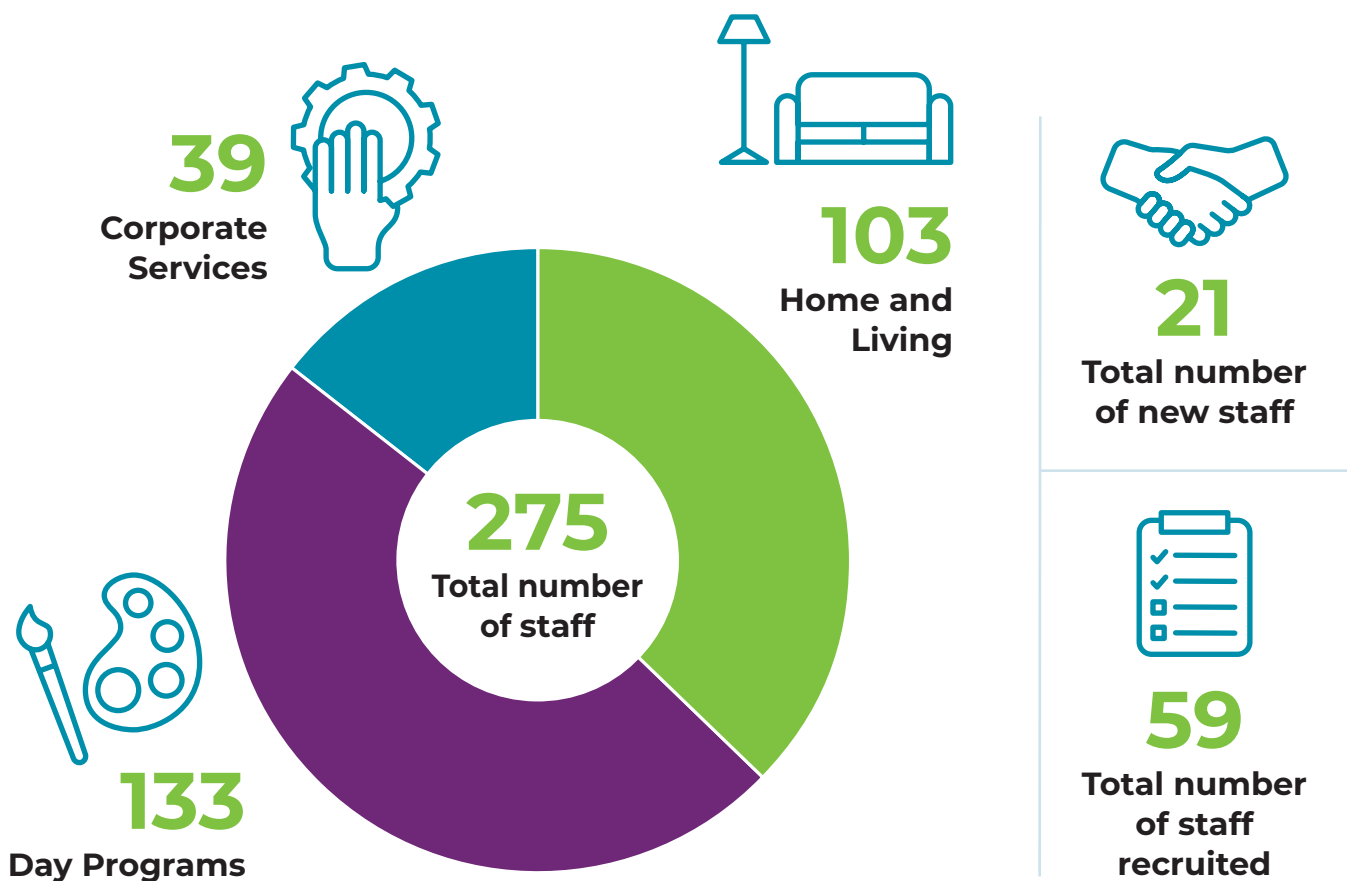
Bill's love of Bayley House, its community and his devotion through practical support, as well as exceptional financial donations, will always be remembered. Bayley House stands stronger today because of the dedication, love and support Bill Hodgson gave so generously. His legacy continues to inspire us.

Thank you, Bill.



At a Glance





Home & Living

At Bayley House, home is more than just a place to live, it is the foundation for independence, confidence and connection.

With the support of over 100 dedicated staff members across our Supported Independent Living, Specialist Disability Accommodation and Short Term Accommodation services, we are alongside people as they take important steps toward their goals. Whether it is building the courage for a first stay away from home, settling into a purpose-built house, or enjoying the stability of long-term living, our Home and Living team create environments where people feel safe, supported and empowered to thrive.

Building homes, creating independence

Our partnership with BlueCHP puts people with disability at the centre of designing their own Specialist Disability Accommodation. The first project in Mentone is underway, which will deliver safe, accessible and secure homes where residents can live with greater independence, choice and community connection.

A recent SOD-turning ceremony was a pivotal moment, marking a significant milestone in our commitment to providing purpose-built homes that support people with disability to live more independently and with greater choice and control.

Friendship, choice, and a future home

A celebratory BBQ marked more than just a gathering, it was the start of a shared journey for future housemates as they take the first steps toward co-designed SDA homes with BlueCHP.

With land secured and planning underway, this event wasn't just about sharing a meal, it was about nurturing relationships and building the confidence needed for a smooth transition into their forever homes. Through shared experiences and short-term stays designed to foster friendship and independence, we are helping

ensure the future residents move forward with choice, connection and a sense of belonging.

Your home, your way

Margaret King, a long term Home and Living resident recently celebrated 65 years of being part of the Bayley House community. At 87 years of age, Margaret is showing no signs of slowing down as she is making the most of the one to one support provided by Bayley House.

Over the past year Margaret's social life has expanded as she is supported each week to delve into her passions. Theatre, pantomimes, musicals and vintage movies are just some of the activities Margaret has been choosing to attend. While some of us might be content to slow down at 87, this is not the case for Margaret who has a long list of events to choose from with the support of her staff.



Adrian finds a home away from home

For Adrian, time away from home had always been a challenge but his stay at Asling Street changed everything. There, he discovered all that Bayley House Short Term Accommodation has to offer.



Above left: Bayley House and BlueCHP; above right: Hayley arriving for her first STA stay; bottom left: Adrian and Caitlyn.

Adrian made the most of having dedicated staff to support him with many outings into the community, from Luna Park to Mornington Peninsula, Adrian made sure that every day was an adventure.

Behind Adrian, every step of the way, were his brother Andy and his wider family, whose fundraising through a cycling event not only supported Bayley House financially but also raised awareness globally as the ride saw cyclists heading from London to Paris adorned in the Bayley House logo!

Andy was absolutely thrilled with the support provided by the STA team; 'I can't thank the team at Bayley House enough. I'm lost for words to explain what it meant to us as a family to have Ade so well taken care of. The respite for Mum and Dad was so incredibly valuable. It meant a huge amount to us as a family and to Ade, who now sees Asling Street as his home away from home'.

More than a getaway

At Bayley House Short Term Accommodation, we provide more than just a getaway. We offer NDIS supported activities designed to help the people we support to build independence, grow their skills and explore new experiences in a safe and welcoming environment. This past year, we welcomed many guests who were staying for the first time.

A new chapter for Hayley

For many people, the idea of moving out of home brings a mix of nerves and excitement and for Hayley, her first short stay at Short Term Accommodation was an important step toward independence. Carefully planned with support from the STA team and her family, Hayley settled into her room with ease and quickly adapted to the routine, including travelling to and from Day Programs as she would at home.

The experience was a resounding success, giving Hayley confidence to return for future stays. Reflecting on her achievement, Hayley encourages others to embrace the opportunity: "Just give it a go – it's really good."

“

Home means where I feel safe, secure, loved, and accepted by everyone.

John, resident of 13 years

Day Programs

Through our Day Programs, the people we support are achieving greater independence, building confidence, and forming meaningful connections that enrich their lives and strengthen our community.

We have seen this across our activity streams Live, Learn, Create, Health & Wellbeing and Pathways to Employment, and at our two sites Middle Crescent and Bayley Arts. Alongside these areas are our expanded Evening and Weekend activities and online programs.

The continued success of our Community Engagement program has seen an increase in staff dedicated to supporting participants in gaining invaluable workplace experience. This has grown further with the employment of clients as Bayley Arts events staff—a natural progression for those who have completed Certificate courses offered in partnership with Access Skills Training.



Nelson



Malcolm

Building confidence, one step at a time

Every day at Bayley House, we witness remarkable achievements. For some people these might seem small or easily taken for granted, but for those we support, they represent huge steps toward their goals.

Nelson, who finds comfort in routine and being around friends, bravely embraced new opportunities by choosing programs that reflect his personal interests. He has joined our band and drama sessions, attended the eco centre and is learning about music production.

By stepping beyond the guidance of his peers, Nelson has shown growing independence, confidence and adaptability, and is thriving with these changes.

Malcolm, a member of our seniors program, has made great progress through the community access program at Castlefield Community Centre, a combined music and movement activity. He now independently joins the group for movement sessions without prompting or guidance from staff or volunteers – demonstrating his growing confidence and autonomy.

Highlights & achievements

Bayley Arts provided an incredible launchpad for artist Teresa McLeod, who successfully led her own sold-out printmaking workshop as part of Bayside Council's Bayside Creatives Month. Teresa co-led the workshop with professional artist and Bayley House instructor Katie Starkey. What made this even more significant is that Teresa was paid the same artist fee as Katie—highlighting that her skills and contributions are equally valued. It's a great example of how we can create fair employment opportunities for people with disability and treat them as respected professionals.



Over the past 18 months, a group of Bayley House participants have met weekly to learn, grow, and graduate from Access Skills Training courses. Two groups, comprising 15 people in total, worked hard to complete their course work. Seven students completed a Certificate I in Work Education over 12 months, while eight completed a Certificate II in Hospitality over 18 months. The sessions also included practical components, with barista training proving a



Top: Margaret receiving her award from John Ashby and John Phillips; above: Jessica modeling at Bayley Arts.



clear favourite – unsurprising in Melbourne, where coffee is practically a second language.

If you've walked down Church Street early in the morning, chances are you've been greeted by James Duchini – or as the locals affectionately call him, the Mayor of Church Street. James, who attends Bayley House, recently earned the title of Bayside City Council Volunteer of the Year 2025 for his tireless efforts helping local businesses throughout the Bayside community.

Bayley Arts

At Bayley Arts, we know art has the power to connect, inspire and create new possibilities. This past year has seen expanded support for artists with disability to explore their creativity and take bold steps into the professional art world.

The Art First: Artist Professional Development Program was initiated to support artists with disability who aspire to further their practice and participate professionally in the arts industry.

Bayley Arts Commercial will launch a new range of merchandise in partnership with Alperstein Design, available to purchase across Australia. This partnership will continue to grow, featuring Bayley Artists' artworks on high-quality products.

Tom Melbourne reached out to our textiles program with the offer of creating inclusive and adaptive equipment to support more people to take part. It was a huge success, with more people now able to use equipment like sewing machines.

2025 Recognition Awards

Name	Years
Marion Buckland	65
Margaret King	65
Thomas Weisner	65
Ed Mulcahy	60
Robert Thomas	60
John Walker	60
Bernard Kennedy	50
Trudy Sheehan	50
Belinda Wallace	25
Phillipa Anderson	20
Whitney Beruldsen	20
Gerald Chee	20
Peter Ginn	20
Teresa Macleod	20
Maddie Read	20
Sally Tran	20
Holli Clancey	15
Fiona Jarick	15
Mary Lawrenson	15
Bar Levin	15
Katherine Mansour	15
Jin Ah Park	15
James Duchini	10
Max Joseph-Jarecki	10
Claudia Latin	10
Lauren Smith	10

Hidden Disabilities

The Hidden Disabilities Sunflower is a simple tool for you to voluntarily share that you have a disability or condition that may not be immediately apparent – and that you may need a helping hand, understanding, or more time in shops, at work, on transport, or in public spaces.

Yarra Trams Community Partnerships Program

This past year we were proud to announce the launch of the Hidden Disabilities Sunflower and Yarra Trams Community Partnerships Program with the big reveal of our Sunflower Tram. Supporting the partnership theme, 'Uplift, Empower and Grow,' the Hidden Disabilities Sunflower team with Blend Creative designed a Tram wrap to encourage organisations to join the program and make their services more inclusive for people with Hidden Disabilities.

As a Sunflower-Friendly organisation, Yarra Trams invited Hidden Disabilities to be part of their Community Partnerships Program which acknowledges and supports for-purpose businesses focusing on important issues that are meaningful to Melbournians. Yarra Trams has trained hundreds of staff to recognise the

Sunflower and support wearers to improve access and inclusion on trams networks across Melbourne. If you see a tram employee out on the network wearing a sunflower supporter badge, feel free to say hello and ask them about their training.

Watch the [Sunflower Tram Launch video](#)

Highlights:

- More than 400 new businesses across Australia and New Zealand proudly joined the Sunflower movement this year, helping to create a more inclusive society.
- [Read here](#) how Redlands City Council won the Customer Service Award for the state of Queensland.
- [Read here](#) how the LEGO Group became a member.



- MCC (Melbourne Cricket Club) received the Inclusive Initiative of the Year award by the Australian Disability Network (ADN) for its Accessibility Familiarisation Day for the Taylor Swift Eras Tour. The initiative, developed in partnership with Hidden Disabilities Sunflower, improved the experience for all 288,000 attendees by leading to changes such as new shuttle services and priority queues.
- Paul White HD Sunflower UK CEO visited Bayley House.
- Australian F1 Grand Prix was the only Sunflower Friendly F1 event in the world and for the second year! The Australian Grand Prix Corporation is proud to be a member of the Hidden Disabilities Sunflower – Australia & New Zealand initiative at the Formula 1 Qatar Airways Australian Grand Prix 2026.

Please check out our [Sunflower Friendly Conversations](#) [here](#).

For all links mentioned on this page, please head to www.hdsunflower.com/au/

“

We're delighted to partner with Hidden Disabilities to showcase their Sunflower Initiative on our final tram for the 2024 Yarra Trams Community Partnership Program. We are proud to share this important message across Melbourne's tram network.

Carla Purcell, Chief Executive Officer, Yarra Trams



JOIN NOW

Businesses can join the Sunflower Movement today!

Emi and Tess appearing on the sunflower tram.



People and Culture

In 2024–2025, the People & Culture team focused on building a skilled, engaged, and supported workforce. Our priorities included staff training and professional development, wellbeing initiatives, cultural transformation, and aligning talent with organisational needs. These initiatives were guided by our values of Connection, Achievement, Respect, and Excellence.

Connection

Employee engagement & experience

This was achieved through focus on wellbeing and mental health, talent development and growth opportunities. Some examples include:

- Promoted mental health awareness and connection through events such as R U OK? Day and annual staff Christmas event.
- Redesigned the 'People Post' newsletter, making it a more engaging and informative platform to keep staff connected and updated on HR initiatives, policies, and programs.
- Commenced messaging around the 'Bayley' approach to culture, which will become an embedded part of how we work together. By utilising Bayley House values as a platform to foster staff engagement where all Bayley House staff operate as one team.
- Conducted health checks with operational staff to debrief and seek feedback on changes required to support a positive team culture.
- Increased internal job and promotion opportunities for staff.

Achievement

- Performance Management and Goal Setting – Introduction of a comprehensive Performance Management process, leveraging the capabilities of our current system to streamline the collection of feedback on staff performance. This approach provided a more responsive platform that supported employee development and growth.

- Maintained compliance with mandatory training requirements, reinforcing our commitment to the delivery of high-quality supports.
- Invested in leadership development through a comprehensive program for managers delivered by the Victorian Chamber of Commerce and Industry, designed to empower leaders with the skills and knowledge needed to effectively guide their teams.
- Work commenced on an organisation-wide Workforce Capability Framework, designed to provide a clear understanding of our current workforce structures and compare them with the NDIS recommended framework. This initiative will support alignment, identify skill gaps, and guide targeted development to build a capable and future-ready workforce.





“

In my experience the culture here is outstanding and you know this team has got your back.

Linda, Day Programs Instructor



Excellence

- A significant increase in partnering with operations to assist with workforce development, management of HR and IR related matters and responsive support to assist with service improvement which positively impacts the delivery of high-quality supports.
- Supported ongoing upskilling and capability building as a strategic priority by revising position descriptions for team leaders and developing a Training Needs Analysis to identify skill gaps to ensure alignment with current requirements of the role in order to support the delivery of services as per NDIS quality and safeguard framework.
- Ensured ongoing compliance with NDIS regulatory standards.

Next steps for future focus (2026)

- The analysis of training needs based on performance review data to better guide training requirements of the organisation.
- Embedding workforce capability framework.
- Implementation of Folio system to support incidents, risk and feedback.

Respect

- The proactive identification, response and management of HR and IR related issues ensuring workplace matters were addressed promptly and fairly, maintaining positive employee relations and compliance with relevant regulations.
- Developed and compiled key metrics to provide leadership with insights into workforce diversity, equity, and inclusion. These metrics enable more informed decision-making, helping to identify gaps, monitor progress, and implement initiatives that foster a respectful and inclusive workplace for all employees.



**Want to work with us?
SCAN HERE**

Supporting Bayley House

Importance of fundraising

While the NDIS provides essential funding, it doesn't cover everything. Many of the programs that enhance emotional wellbeing, build independence, and foster community inclusion fall outside of NDIS funding. That's why we turn to the generosity of our community to help bridge this gap, ensuring that adults with intellectual disability can continue accessing programs to enable them to thrive.

Our donors and supporters have been crucial in ensuring that the people we support can rely on life-changing programs to be available at a time when they need them most. Over the past 12 months, thanks to our generous donors and supporters, we were delighted to have raised over **\$758,000***.

Whether you supported our appeals, participated in our March Challenge, fundraised for us, provided a donation or grant for one of our projects, or donated goods or services, you helped us achieve our fundraising goal and we are very grateful.

The Festive Season Appeal this year was focused on raising funds for program materials, equipment for our work experience program, upgrades to our accommodation and access to our health and wellbeing programs. The Bayley House community rallied behind our Appeal and we achieved our goal, raising over **\$43,000**.

With our Mid-Year Giving Appeal, we were successful in raising **\$150,000**. These funds will help us to continue to provide person-centred services creating more opportunities for our clients to make choices that will shape their future.

In addition to the appeals, we have had many supporters contribute to Bayley House over the past twelve months in other ways. We were delighted that over 30 individuals participated in our March Challenge this year by walking,

“

Our donors and supporters are the heartbeat of Bayley House, crucial in ensuring life-changing programs are available when they are needed most.

running or rolling to raise much needed funds for Bayley House. Bayley House has also generated significant funding from a range of Trusts and Foundations in the form of grants specifically to introduce new programs and assist with program resources.

Another key contributor to the fundraising total, are the funds from the Bayley House Foundation. Led by a dedicated volunteer Board, the Foundation contributed strongly again to support urgent maintenance upgrades to the residential accommodation and to enable us to conduct a property audit to determine the property upgrade requirements into the future.



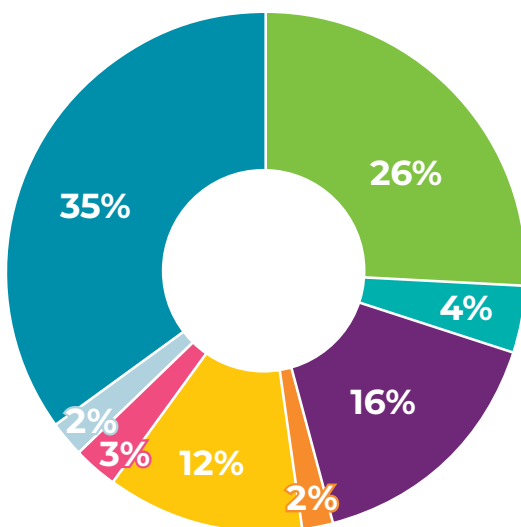


Our dedicated community fundraisers

We were excited to receive the support of 17 riders who participated in the CBTUH Riding Challenge, riding a total of 540km from Paris to London to raise funds for Bayley House. It was an incredible feat of endurance and perseverance.

Thank you to our Family and Friends Group who continue to support us in many ways and were integral in helping us establish the container deposit scheme this year, an active fundraiser that has morphed into an exciting new program.

Thanks also to Residential Raisers who continue to fundraise for Bayley House to support the critical maintenance requirements across our facilities and accommodation.



*This total differs from that reported in the financial statements due to accounting standards in relation to acquittal of grant money.

2024/2025 Fundraising Income

Campaigns

- Appeals
- Bayley House Charity Lunch
- Bayley House Foundation
- Business Donations
- Community Fundraising
- General Donations
- In Kind Donations
- Trust & Foundations/Grants

Your Legacy in Action

The Bayley House Foundation continues to play a vital role in supporting projects that enhance the lives of the people we support. Each year, the Foundation provides a distribution to Bayley House that enables investment in essential initiatives that would not otherwise be possible.

We are thrilled to share that the FY25 Foundation distribution will fund critical upgrades to several of our residential properties. These improvements will enhance comfort, safety, and accessibility, creating environments that better support independence, wellbeing, and a true sense of home. As these types of capital works fall outside NDIS funding, the Foundation's support is essential.

We embarked upon raising awareness of legacy giving this past year by participating in the national Include a Charity campaign. The campaign helped generate new interest and celebrated the profound, long-term impact that a Gift in Will can create.

Our Gifts in Wills program also gained momentum throughout the year. We've seen an increase in enquiries and are incredibly grateful to those who have confirmed their intention to leave a Gift in their Will. These generous commitments help ensure Bayley House can remain strong and responsive to the evolving needs of our clients.

A key focus of our work has been ensuring that supporters have access to the tools and guidance they need to make confident, informed decisions around their estate planning. We hosted a series of information sessions in partnership with Wills & Wealth and Lakeside Lawyers, providing practical advice and trusted expertise to help individuals ensure their estate plans are current and relevant to their unique circumstances.

As we look ahead, it's clear that a sustainable future for Bayley House will depend in part,



on the continued growth and support of the Foundation. Its ability to respond to emerging needs and fund initiatives as they arise will be crucial in maintaining the quality, flexibility and innovation that Bayley House is known for.

We also take this opportunity to thank Stephen Mitchell, who stepped down from the Bayley House Foundation Board this year. Stephen's thoughtful leadership and years of service have helped shape the direction of the Foundation, and we are sincerely grateful for his generous contribution.

We thank everyone who has enquired, attended a session, supported our campaigns, or confirmed a legacy gift over this past year. You are helping to build a stronger, more inclusive future for the people we support.

If you would like to know how you can leave a Gift in your Will, please email legacygiving@bayleyhouse.org.au for a confidential discussion.



**Read more
information about
Bayley House
Foundation.**



Brodie and
James at the
Fashion Show.





Harry, behind
the lens.

Finance

From our Treasurer, Jeffrey May

We are pleased to report an overall surplus of **\$534,150** for the 2024 – 2025 financial year. This surplus comprises an operating deficit of **\$757,970** from our ongoing operations and philanthropic and investment income of **\$867,842**.

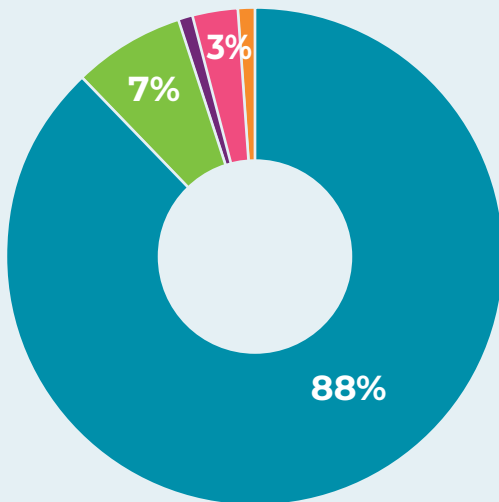
I mentioned last year that a short term goal is to ensure that Bayley House's operating businesses within the NDIS framework become at least financially breakeven. I am pleased to report that while not yet at breakeven, our operating deficit for the year is significantly lower than the prior year and it is anticipated that additional initiatives in the 2025 – 2026 financial year will help reduce the gap. The Board will continue to support our CEO, Deborah Stuart, and her Executive Team with its ongoing review of the services and supports we provide to Bayley House clients and the community to ensure that Bayley House remains in a strong financial position without compromising the quality of services.

We continued to build our accumulated capital that is invested in the capital markets. Income

and gains from these investments, along with donations from the Bayley House community, allowed us to provide clients and families with the level of care and support expected by the Bayley House community. We are also extremely grateful for the continued support from the Bayley House giving community with philanthropic donations totalling **\$676,319**. In addition, our Hidden Disabilities Sunflower program is performing extremely well and has had a positive impact on our financial position.

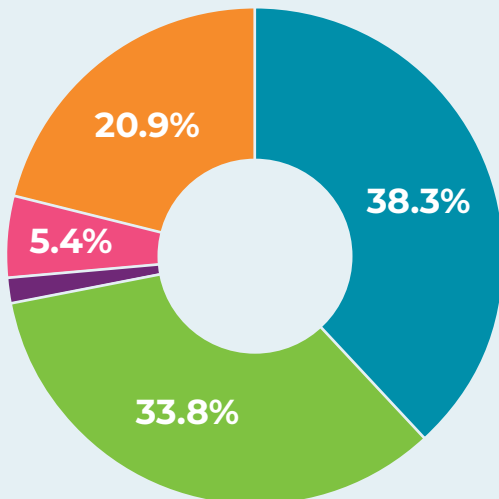
I would like to thank Deborah Stuart and our CFO, Greg Patterson, and his finance team for their continued support through the year and members of the Finance and Risk Committee for their dedication in keeping Bayley House in a strong financial position.

Where the money came in from 2025



- Client Revenue
- Commercial Income
- Other Income
- Donations
- Investment Income

Where the money went in 2025



- Home & Living
- Day Programs
- Support Coordination
- Commercial
- Corporate & Other

Bayside City Council Mayor Hanna El Mouallem, Annie, Bri, Robbie and Tessa at the 'Around the Table' opening.



Thank you to Our Community

Thank you to every individual, family or organisation that donated to Bayley House again this year. You have positively impacted the lives of people with intellectual disability.

We hope you will continue to support us as we look to the year ahead. With the ongoing NDIS challenges, fundraising continues to be more critical than ever to Bayley House to ensure we can continue to offer transformative programs and services for the people we support.

Trusts & Foundations/ Grants

Bayley House Foundation Ltd

Bayside City Council

Bendigo Bank – Sandringham
Community Branch

Freemasons Foundation, Lodge of Quest,
Lodge EOS, Lodge Australia Felix and
Lodge of Concentration

Gandel Foundation

Ian and Shirley Norman Foundation

Intellectual Disability Care Foundation –
Robert Oswald Ball

Killen Family Foundation

Leonard Family Foundation

Lord Mayors Charitable Foundation –
Anteauss Charitable Fund

Lord Mayors Charitable Foundation -
Vulcan Family Fund

Moller Family Foundation

Spencer Gibson Foundation

Organisations & Businesses

Accru Melbourne

Harvey Norman Commercial

Hymans Valuers & Auctioneers

Macquarie Bank

Morgans Foundation

Nick Johnstone Real Estate

Riktwood Pty Ltd

Tobin Brothers

Community Fundraisers

Bayley House Family and Friends

Residential Raisers

Biccy's Opportunity Shop

CTBUH

Victoria Golf Club – The Monday Boys

**[Click here](#) to learn more about
how you can make an impact and
support Bayley House, or contact
fundraise@bayleyhouse.org.au**



Jacqui and Caitlin at the 2024 Gala Art Show.

Thank you to our Board

We would like to thank the Bayley House Board for their contributions and strategic guidance over the past 12 months and acknowledge that these are unpaid voluntary positions. To the Executive Leadership team, thank you for guiding your teams with integrity whilst retaining a strong focus on delivering high quality customer support. We extend our deepest gratitude to our workforce for their dedication to the people we support. The past year has presented significant challenges for Bayley House and the wider disability sector. The steadfast commitment of all our staff to deliver exceptional support has been instrumental in enabling the people we support to achieve their goals. Thank you for your continued hard work and resilience.

As we enter our 75th year in 2026 we are excited to celebrate with the community that has been the foundation of Bayley House, your enduring commitment will ensure Bayley House remains the special place it has and will always be, thank you.



BAYLEYARTS



bayleyhouse.org.au

PO Box 113, Brighton VIC 3186
03 9982 1500

contactus@bayleyhouse.org.au



blendcreative.com.au