

*Welcome to the
Family Forum*

Bayley House – BlueCHP
Specialist Disability Accommodation



Presentation commencing soon



» **WARWICK CAVANAGH**

CEO, BAYLEY HOUSE

Presentations - 45 minutes

- Background – John Ashby Chair Bayley House
- BlueCHP providing SDA housing for Bayley House clients
Charles Northcote CEO BlueCHP
- Introduction to GuideYouHome and participant lead housing design
Michelle Northcote – National Manager - Disability Housing BlueCHP
- GuideYouHome Seven Step process in detail – How BlueCHP works with families to co design SDA homes
Rebecca Bristow – SDA Housing Specialist
- Bayley House Team providing care (SiL) and managing BlueCHP SDA Homes
Andy Gabriel GM Home and Living Support

Questions and Answers - 15 Minutes

Conversations and Refreshments– 60 minutes

- All the speakers will be available to meet with families to discuss SDA homes and SiL services.



A NOT-FOR-PROFIT TIER-ONE COMMUNITY HOUSING PROVIDER

Who you'll hear from today



» **JOHN ASHBY**

CHAIR OF BAYLEY HOUSE
BOARD



» **CHARLES NORTHCOTE**

BLUECHP CEO



» **MICHELLE NORTHCOTE**

BLUECHP NATIONAL MANAGER
DISABILITY HOUSING



» **REBECCA BRISTOW**

BLUECHP SDA HOUSING
SPECIALIST – VIC, TAS & SA



» **ANDY GABRIEL**

BAYLEY HOUSE
GM HOME AND LIVING
SUPPORT



Exceptional support for people with intellectual disability

The Future of SDA

22 March 2023

Our Promise



A NOT-FOR-PROFIT TIER-ONE COMMUNITY HOUSING PROVIDER

AFFORDABLE SOCIAL DISABILITY HOUSING

For Bayley House Families



www.bluechp.com.au

www.bayleyhouse.org.au

Making SDA housing a reality

for eligible Bayley House family members

- The Board and the leadership team have been working to develop a housing pathway to Specialist Disability Accommodation.
- NDIS prefers SDA providers to provide the housing and SIL providers to manage the homes and provide the care and support.
- Bayley House is collaborating with BlueCHP who are a non-profit community housing provider.
- Please take this opportunity to learn, ask questions and use the second hour to speak directly with our speakers.
- We aim to open a pathway to SDA housing and support for all our NDIS SDA eligible Bayley House clients.



» **JOHN ASHBY**

CHAIR OF BAYLEY HOUSE BOARD



A NOT-FOR-PROFIT TIER-ONE COMMUNITY HOUSING PROVIDER

AFFORDABLE SOCIAL DISABILITY HOUSING

*Accommodation
- your new home*



www.bluechp.com.au

www.bayleyhouse.org.au



A NOT-FOR-PROFIT TIER-ONE COMMUNITY HOUSING PROVIDER

We are a not for profit, tier one, Housing Association (Community Housing Provider)

Who is BlueCHP?

What is SDA?

Our journey with SDA

Partnership with Bayley House



2,000 + people
Social, Affordable
& Disability
housing

Provider of
Specialist Disability
Accommodation (SDA)
to
400+ people



» **CHARLES NORTHCOTE**
BLUECHP CEO



A NOT-FOR-PROFIT TIER-ONE COMMUNITY HOUSING PROVIDER

A **participant-led** approach



- 1 LET'S CHAT
- 2 PUT THE TEAM TOGETHER
- 3 PLAN YOUR HOME
- 4 GIVE YOUR STAMP OF APPROVAL
- 5 BUILDING BEGINS
- 6 MOVE IN!
- 7 WE'RE IN THIS TOGETHER



» **MICHELE NORTHCOTE**

BLUECHP NATIONAL MANAGER –
DISABILITY HOUSING

AFFORDABLE SOCIAL DISABILITY HOUSING



A NOT-FOR-PROFIT TIER-ONE COMMUNITY HOUSING PROVIDER

**RYDALMERE
ROOMS DESIGNED TO
THEIR NEEDS**



» **MICHELE NORTHCOTE**

BLUECHP NATIONAL MANAGER –
DISABILITY HOUSING



AFFORDABLE SOCIAL DISABILITY HOUSING





A NOT-FOR-PROFIT TIER-ONE COMMUNITY HOUSING PROVIDER

THE SEVEN-STEP PROCESS



- 1 LET'S CHAT
- 2 PUT THE TEAM TOGETHER
- 3 PLAN YOUR HOME
- 4 GIVE YOUR STAMP OF APPROVAL
- 5 BUILDING BEGINS
- 6 MOVE IN!
- 7 WE'RE IN THIS TOGETHER



» REBECCA BRISTOW

BLUECHP SDA HOUSING SPECIALIST
– VIC, TAS & SA

AFFORDABLE SOCIAL DISABILITY HOUSING



THE SEVEN-STEP PROCESS

Who is eligible for SDA?

✓ 1. Does the applicant have an extreme functional impairment and/or very high support needs?

✓ 2. Does the applicant have an SDA needs requirement?

✓ 3. Is SDA reasonable and necessary for the applicant?



» **REBECCA BRISTOW**

BLUECHP SDA HOUSING SPECIALIST
– VIC, TAS & SA

THE SEVEN-STEP PROCESS

How to apply for SDA funding



» **REBECCA BRISTOW**

BLUECHP SDA HOUSING SPECIALIST
– VIC, TAS & SA



IMPROVED LIVEABILITY



ROBUST



FULLY ACCESSIBLE



HIGH PHYSICAL SUPPORT



A NOT-FOR-PROFIT TIER-ONE COMMUNITY HOUSING PROVIDER

THE SEVEN-STEP PROCESS



- 1 LET'S CHAT
- 2 PUT THE TEAM TOGETHER
- 3 PLAN YOUR HOME
- 4 GIVE YOUR STAMP OF APPROVAL
- 5 BUILDING BEGINS
- 6 MOVE IN!
- 7 WE'RE IN THIS TOGETHER



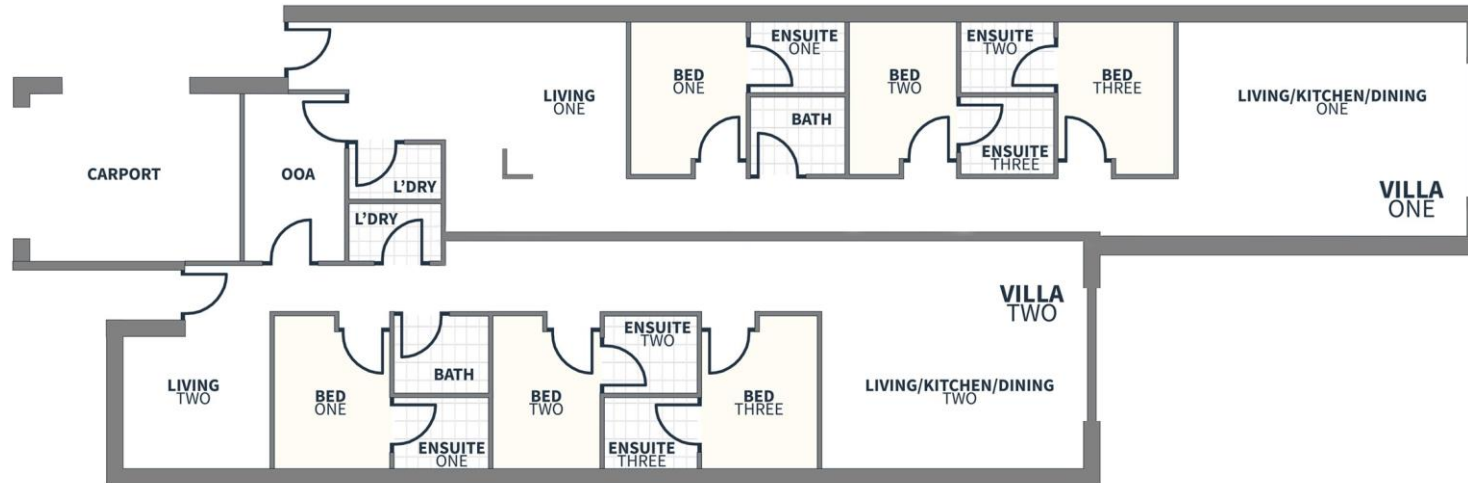
» REBECCA BRISTOW

BLUECHP SDA HOUSING SPECIALIST
– VIC, TAS & SA

AFFORDABLE SOCIAL DISABILITY HOUSING



THE SEVEN-STEP PROCESS



» **REBECCA BRISTOW**

BLUECHP SDA HOUSING SPECIALIST
– VIC, TAS & SA

Key Design Principles

- ✓ Sustainable Designs
- ✓ Provision for Assistive Technology
- ✓ Storage Areas
- ✓ Individual Bathrooms
- ✓ Long-term lease



Exceptional support for people
with intellectual disability

The Future of SDA

22 March 2023



A NOT-FOR-PROFIT TIER-ONE COMMUNITY HOUSING PROVIDER

AFFORDABLE SOCIAL DISABILITY HOUSING

Supported Independent Living



www.bluechp.com.au

www.bayleyhouse.org.au

What is Supported Independent Living (SIL)?

Our Home and Living Team will manage your BlueCHP SDA home and provide the care and support you need to live independently.

Supported independent living is the name of the NDIS funding that provides supports to people with disability to help them live as independently as possible.

SIL funding is typically for people who need 24/7 support living in SDA housing or other supported housing. It covers the support staff costs.

SIL covers the personal care and skill building supports you receive in your home – it does not pay for rent, home modifications or day-to-day living expenses like food and utilities.



» **ANDY GABRIEL**
GM HOME AND LIVING SUPPORT

Home and Living Support Your steps to living independently

- **Eligibility** - BlueCHP and Bayley House aim to create SDA homes for all eligible Bayley House SDA clients.
- **Co-ordination** - We lead the selection of resident groups who can live together in harmonious and well supported homes.
- **Plan** - Develop the roster of care, commence co-design process to ensure SDA homes meet resident and staff needs.
- **Getting Ready** - Assist clients to prepare and develop skills for living in their new home and support clients and families to be linked together.
- **Moving In** - Service agreements signed and Individual transition plans, ensure continuity of care, follow up feedback and review as you settle in.



» **ANDY GABRIEL**

GM HOME AND LIVING SUPPORT



Exceptional support for people
with intellectual disability

The Future of SDA

22 March 2023



A NOT-FOR-PROFIT TIER-ONE COMMUNITY HOUSING PROVIDER

AFFORDABLE SOCIAL DISABILITY HOUSING

*Thank you
Any Questions?*

www.bluechp.com.au

www.bayleyhouse.org.au



A NOT-FOR-PROFIT TIER-ONE COMMUNITY HOUSING PROVIDER

Who to speak to



» **REBECCA BRISTOW**

BLUECHP SDA HOUSING SPECIALIST
– VIC, TAS & SA



» **ANDY GABRIEL**

BAYLEY HOUSE
GM HOME AND LIVING SUPPORT



» **CHARLES NORTHCOTE**

BLUECHP CEO



» **MICHELE NORTHCOTE**

BLUECHP NATIONAL MANAGER
DISABILITY HOUSING

AFFORDABLE SOCIAL DISABILITY HOUSING